

AMICO

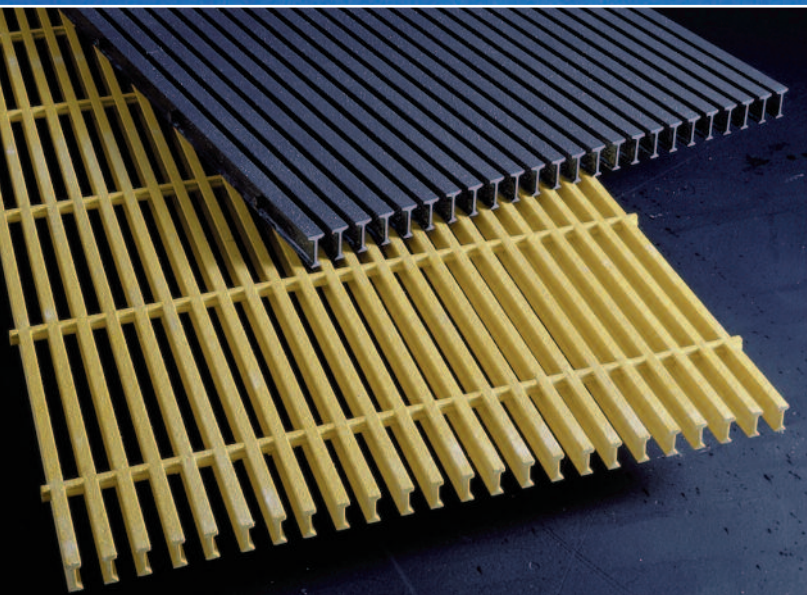
*seasafe*<sup>®</sup>

FIBERGLASS GRATING &  
STRUCTURAL SYSTEMS

A GIBRALTAR INDUSTRIES COMPANY 

(800) 326-8842

## FIBERGLASS GRATING & STRUCTURAL SYSTEMS



# Safety & Ergonomic Benefits

# SAFE

# means more to us than just being part of our name.

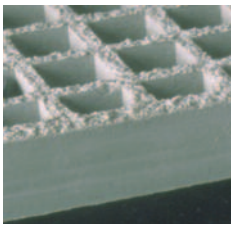
The Seasafe company and all of our products are dedicated to improving plant safety, particularly in helping minimize one of the most common occurrences - the industrial slip-and-fall accident. Falls are a major culprit accounting for as many as 36% of injuries, according to a large national property and casualty insurer. And all classes of injuries are occurring more frequently, with their accompanying loss of vital workdays and continually-increasing cost of lost workdays (see chart below).



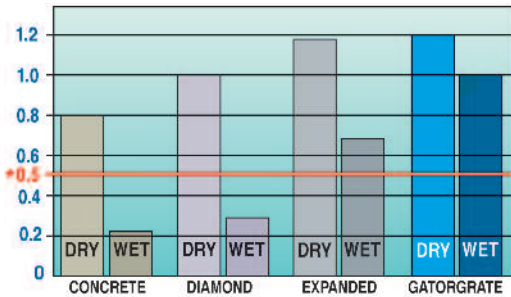
## Even when wet – SEASAFE grating helps prevent costly slips and falls

Seasafe fiberglass grating is an anti-slip, corrosion-resistant grating used for floors, platforms, stairs, ramps, catwalks and trench covers. It is designed to replace metal and wood grating in slippery, hazardous and corrosive environments.

The grating is available in either molded or pultruded forms. Molded grating (GatorGrate) has an integral grit top, providing a long-life surface with positive traction. Seasafe's pultruded grating (GatorDeck) has a coarse grit, epoxy bonded to the walking surface, for improved slip resistance. Seasafe's grating really stands out in wet environments! In the chart below, notice the minimal drop in the Coefficient of Friction values for "wet vs. "dry" testing of GatorGrate. When tested wet, GatorGrate achieved a 1.0 Static Coefficient of Friction value. The leading competitive product lost approximately 40% of its Coefficient of Friction when tested wet. *OSHA recommends a static Coefficient of Friction of 0.5 or higher.* In many industrial situations, the presence of water, grease, oil, coolants and chemicals generate wet and slippery surfaces. Use Seasafe's grating products in these applications and reduce your slip-and-fall problems.

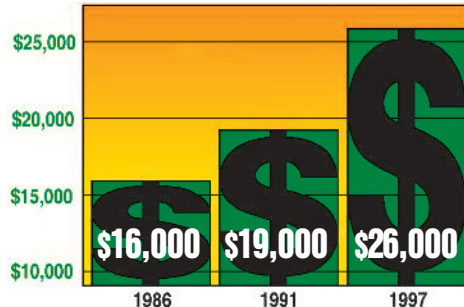


STATIC COEFFICIENT OF FRICTION VALUES



\*OSHA recommends factory floors and working surfaces have a Static Coefficient of Friction 0.5 or higher. These test results are based on the static, sliding block method; utilizing dry or wet (water) walking surfaces.

THE COST OF LOST WORKDAYS IS RISING



This chart is based on National Safety Council data. Dollar amounts shown are the average total costs for lost workdays due to employee injuries in the chemical process industry.



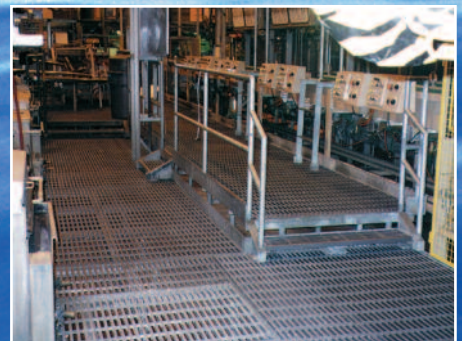
Cooling Tower featuring Seasafe grating and handrails.



Personnel walkway, chemical and waste water treatment plants.



Marine industry.

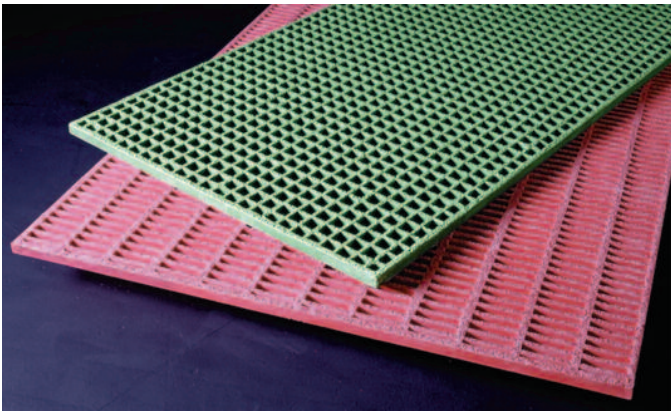


Brewery keg line.

Seasafe products help make your plant a safer workplace.

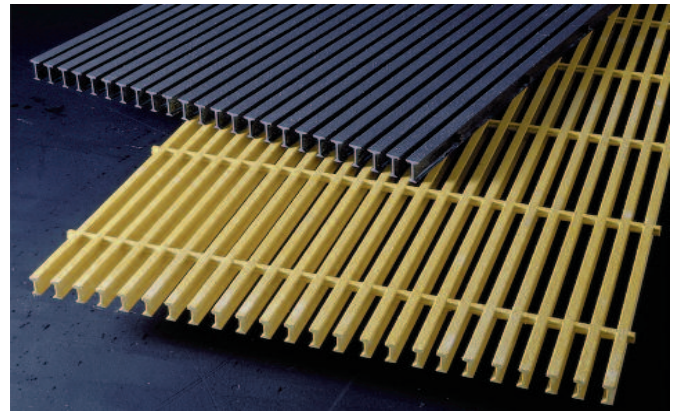
## FIBERGLASS GRATING

### OPEN MOLDED



GatorGrate™ open molded grating has an integral grit top that provides positive traction in both wet and dry conditions. It is manufactured by interweaving continuous, thoroughly-wetted, fiberglass strand with thermosetting resin systems. This grating provides strength in both directions as well as outstanding chemical resistance. GatorGrate has a high strength-to-weight ratio and is virtually maintenance-free.

### PULTRUDED



GatorDeck™ pultruded grating has an anti-slip, coarse grit epoxy bonded to the walking surface. Pultrusion manufacturing yields a high glass-to-resin ratio with superior load-supporting ability over longer spans. GatorDeck's patented flush-top interlocking cross rod and bearing bar design is reinforced with an epoxy adhesive bond, increasing unidirectional strength and enabling easy fabrication.

### GatorPlate and KorPlate



GatorPlate™ eliminates those troublesome and unsafe slippery spots in your plant. These plates are easily attached to concrete, metal, or any solid surface. GatorPlate has an integral grit top. GatorPlate offers a long-lasting solution - even when grease, oil, water, and chemicals are present, and will reduce slip-and-fall accidents.

### GatorTread and Stair Tread Cover



GatorTread™ and Stair Tread Covers offer rugged performance and safety-enhancing characteristics. GatorTread is used for new stairs or replacement of existing treads. Stair Tread Covers are easily attached to existing concrete, metal, or wood treads. Integral grit top anti-slip surface and high-visibility contrasting nosing can make your slippery stairways safe again.

### Caged Ladders and Handrails



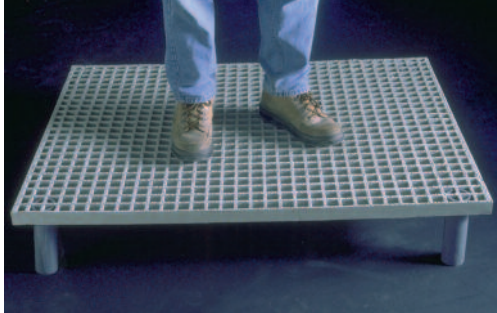
Caged ladders and Handrail systems manufactured from FRP materials at Seasafe help to provide a safer work environment. These products are built to meet OSHA regulations and are standard safety yellow in color.

Seasafe fiberglass reinforced plastic (FRP) products are corrosion resistant, include UV inhibitors and have a high strength-to-weight ratio. These products are available in isophthalic polyester or vinyl ester resin systems and are Class 1- Fire Retardant per ASTM E-84.

# ERGONOMIC NOTE:

If your people stand in one place for long periods of time, Seasafe grating can make them more comfortable and productive.

## WORK PLATFORMS



### FITS ALL SIZES OF WORKERS FOR ALL KINDS OF JOBS.

Lightweight, versatile, portable work platforms will help make your workers more comfortable and more productive. Ergonomic studies have shown that tiredness, back strain and leg fatigue are relieved by standing on surfaces that are resilient rather than unyielding. Seasafe work platforms are the ideal solution: One person can easily pick up and move the platform to wherever it's needed. Work platform pedestals are available in varying heights to match the worker to the job requirements.

## How does the resiliency of Seasafe grating help your workers?

### THE ART OF FITTING THE PERSON TO THE JOB.

Ergonomics is a way of improving the layout of workplaces and the overall organization of work. In the past, plant layouts involved the efficient placement of machinery. But now – managers are searching for ways to keep workers healthy, happy, safe and productive. Non-fatigued workers are also less prone to errors and accidents, with improved morale.

**STANDING IN ONE PLACE IS HARD.** Standing in one place, on an unyielding surface generates stress and pain in the lower back. One way to relieve this stress is to provide a resilient surface, one that "gives" slightly under a worker's weight.

**HOW SEASAFE HELPS.** Seasafe's safety-oriented Gator-Deck and GatorGrate grating are manufactured in standard-sized panels. Made with an anti-slip

top surface to help reduce slips and falls, they are mostly used for walking surfaces and work platforms. Both have a slight resiliency that makes them comfortable to stand on for long periods of time.

**IT'S A WIN-WIN APPROACH.** You help your workers and you benefit from increased productivity, reduced Workers Compensation costs and improved worker morale.



FIBERGLASS GRATING &  
STRUCTURAL SYSTEMS

A GIBRALTAR INDUSTRIES COMPANY 

Seasafe, Inc. 209 Glaser Dr. - Lafayette, LA 70508

Toll Free: 800-326-8842 Fax: 337-406-8880

e-mail: [seasafe@seasafe.com](mailto:seasafe@seasafe.com) - Homepage: [www.seasafe.com](http://www.seasafe.com)

**seasafe** products are made in the U.S.A.

All trade names mentioned herein are registered trademarks of Seasafe, Inc. unless otherwise designated.