

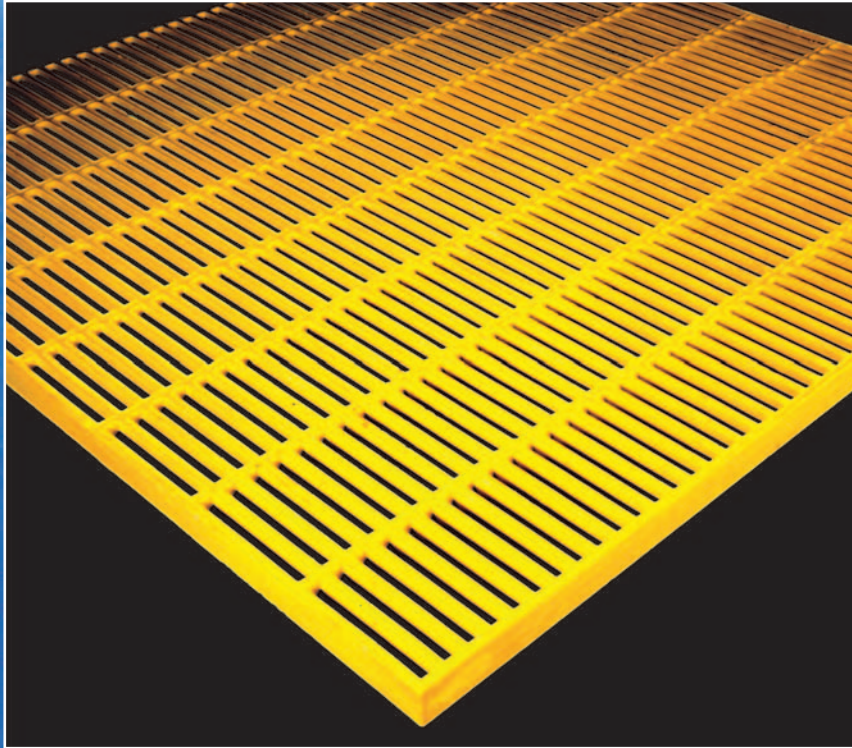


seasafe®

FIBERGLASS GRATING &
STRUCTURAL SYSTEMS

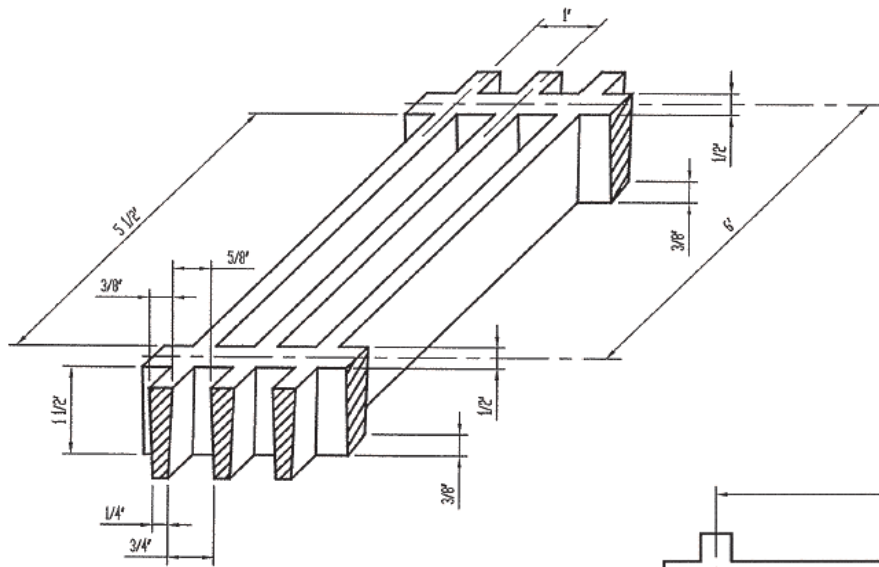
A GIBRALTAR INDUSTRIES COMPANY 

SPECIALTY GRATING SERIES



***GatorGrate* Molded Grating**
RM-1615

GatorGrate RM-1615

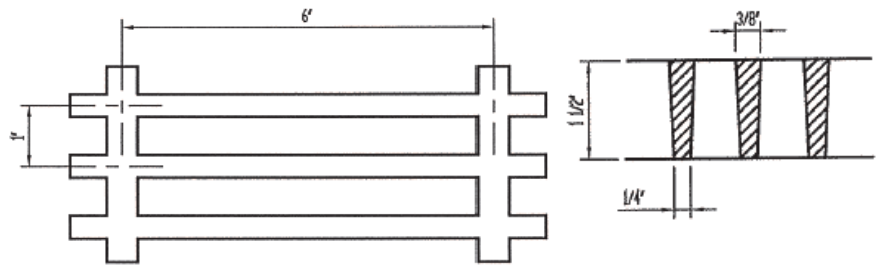


Open Area: 63%
Thickness: 1-1/2"
Mesh Pattern: 1" x 6"
Approx Weight: 4.5 lbs / sq ft

Seasafe Standard

Resin	Color	Size
PFR	Yellow	4'x12'
IFR-Plus	Green	4'x12'
VFR	Orange	4'x12'

- Call your Seasafe Representative for information on custom sizes and colors.



Clear	Concentrated Load, in Lbs., Deflection in Inches									
									.250"	.375"
Span	100	200	300	500	750	1000	1500	Def	Def	
12"	0.013	0.024	0.035	0.056	0.076	0.097	0.126	3982	7097	
18"	0.022	0.038	0.052	0.078	0.107	0.132	0.176	2438	4532	
24"	0.031	0.052	0.071	.011	0.156	0.201	0.283	1292	2088	
30"	0.042	0.077	0.111	0.18	0.258	0.332	0.475	724	1149	
36"	0.062	0.114	0.162	0.255	0.367	0.476	**	490	768	
42"	0.086	0.171	0.255	0.423	**	**	**	293	442	
48"	0.116	0.227	0.337	**	**	**	**	220	334	

Clear	Uniform Load, in Lbs./Ft2 Deflection in Inches									
									.250"	.375"
Span	50	75	100	150	300	500	1000	Def	Def	
12"	0.003	0.005	0.006	0.009	0.019	0.031	0.062	4046	6069	
18"	0.007	0.010	0.013	0.020	0.039	0.065	0.131	1915	2872	
24"	0.013	0.020	0.027	0.040	0.080	0.133	0.265	943	1415	
30"	0.027	0.040	0.054	0.081	0.161	0.269	**	465	698	
36"	0.048	0.072	0.096	0.143	0.287	0.478	**	262	393	
42"	0.093	0.140	0.186	0.279	**	**	**	134	202	
48"	0.142	0.214	0.285	0.427	**	**	**	88	132	



Seasafe, Inc.
 209 Glaser Dr.—Lafayette, LA 70508
 Toll Free: 800-326-8842 Fax: 337-406-8880
 Email: seasafe@seasafe.com—Homepage: www.seasafe.com
 All trade names mentioned herein are registered trade marks of Seasafe, Inc. unless otherwise designated.

Load and deflection data was derived from lab tests conducted by Seasafe, Inc. Values tabled are for design selection and are approximate. Seasafe recommends selecting gratings based on a deflection of .25-inch or less. This deflection may be exceeded at the discretion of the designer. Deflections of .25-inch or less will give excellent pedestrian comfort. Deflections of .375-inch or less will give satisfactory pedestrian comfort. Loads for short spans in the .250 and .375 deflection columns have been omitted to allow for shear properties.

** Deflections greater than 0.500" have been omitted.